

INTEREST – International Remote Student Training Wave 3

Radiation Protection and the Safety of Radiation Sources

Supervisor: Dr Said Abou El-Azm

(Dzhelepov Laboratory of Nuclear Problems)

- **Name: Sarah Reda Mahmoud Helmy
AbdElaziz**
- **Student at faculty of engineering, Nuclear
and Radiation department**
- **Country: Egypt**

Task 1: The Bismuth Germanium Oxide (BGO) detector

. Its scintillation properties allow the subsequent detection of the absorbed radiation, as it is an important tool for the detection of (p, γ) reactions.

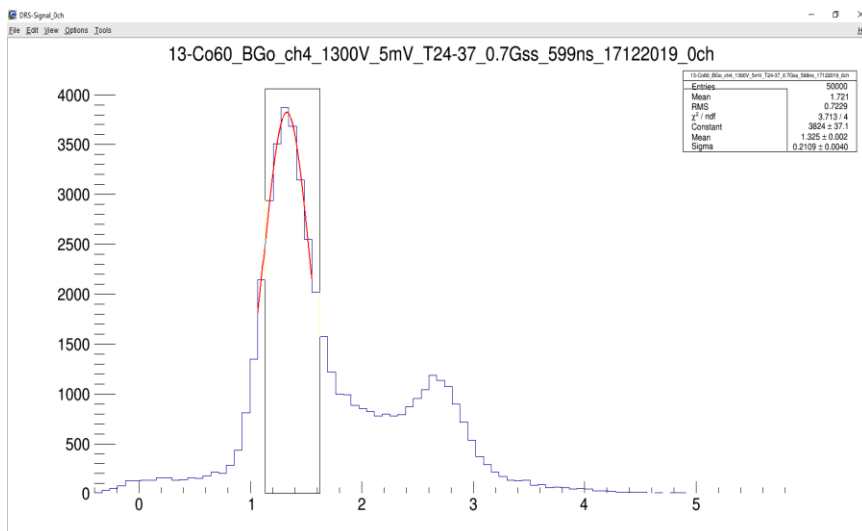
Required:

- 1- Dependence of resolution on the applied voltage for BGO detector
- 2-The calibration spectra for BGO detector

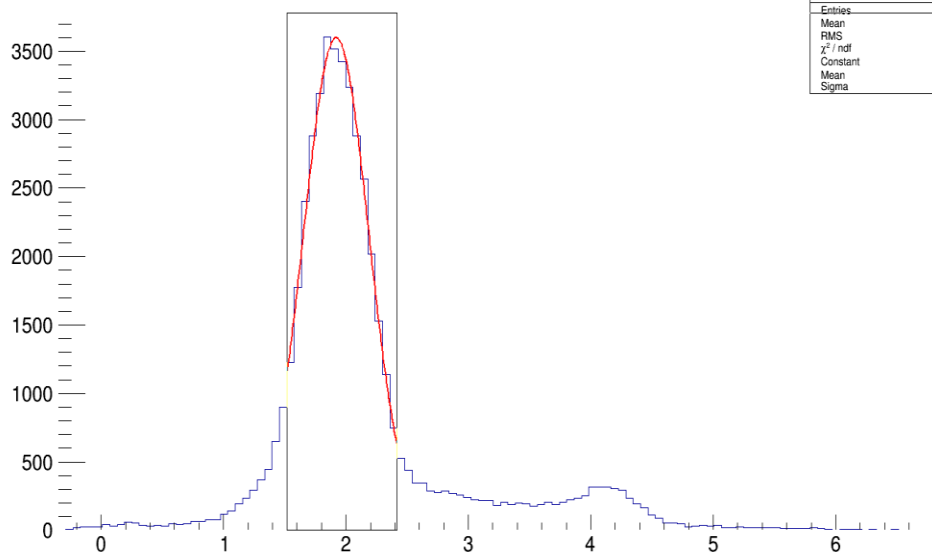
Task 1:

The energy resolution (Re) of a detector measures its ability to distinguish gamma-rays with close energies. The better the energy resolution, the better it can separate two adjacent energy peaks, which allows identifying different decays or radionuclides in the spectrum. Re is obtained from the peak full width at half of the maximum height (FWHM)

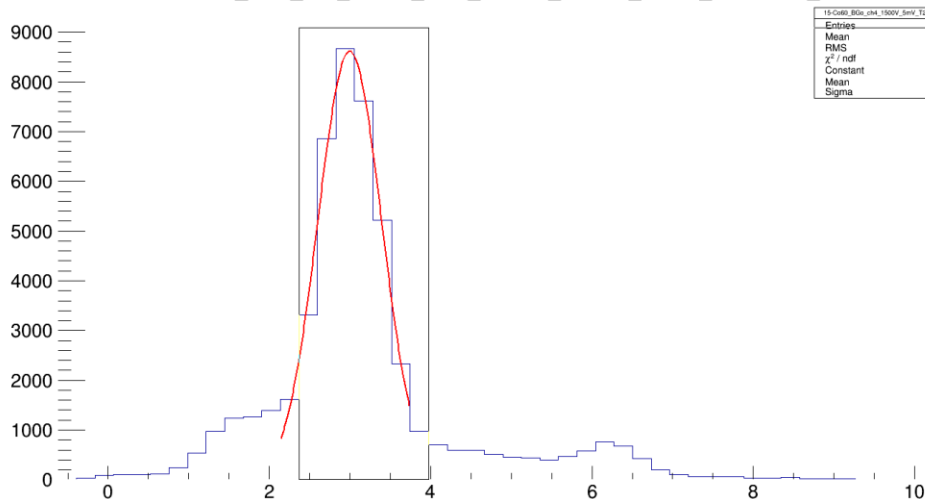
$$Re = (\text{Sigma} * 2.35) / \text{mean}$$



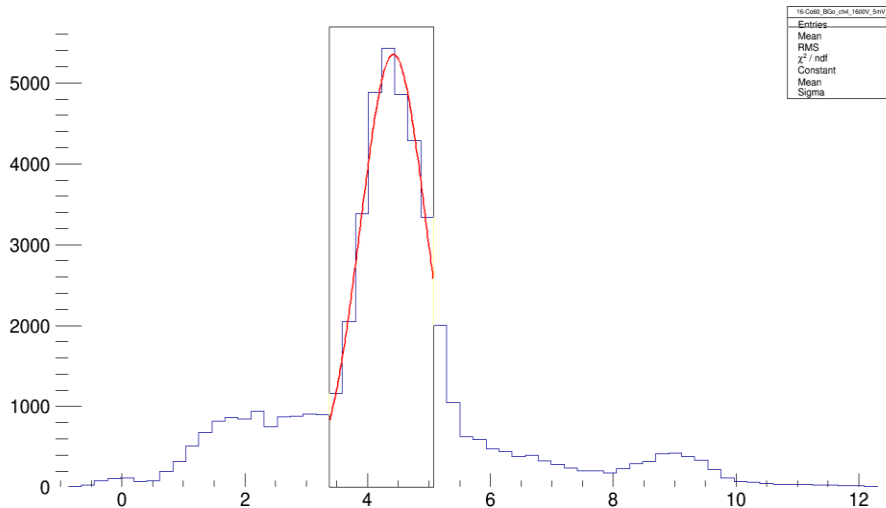
14-Co60_BGo_ch4_1400V_5mV_T24-37_0.7Gss_599ns_17122019_0ch



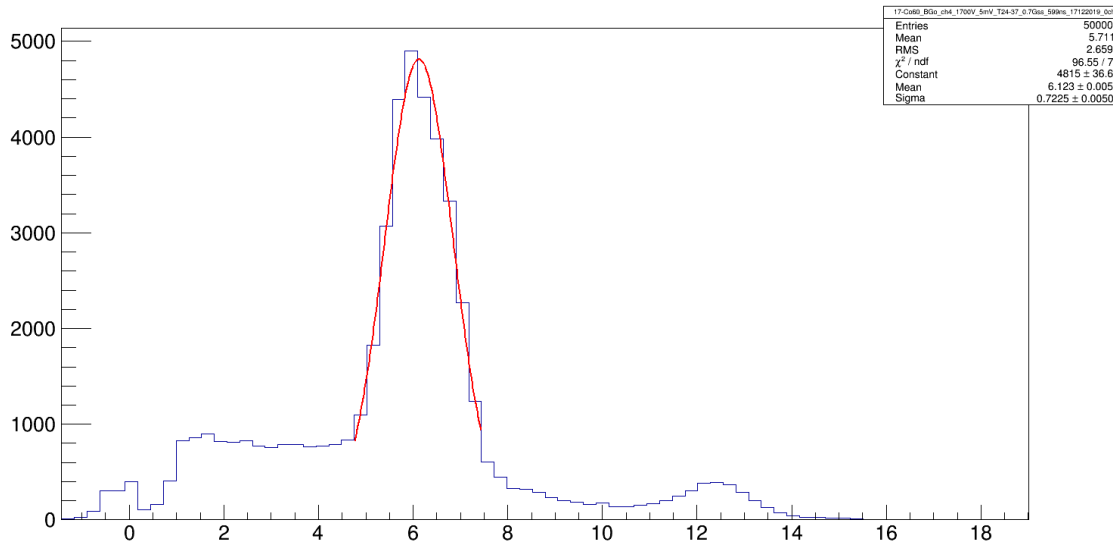
15-Co60_BGo_ch4_1500V_5mV_T24-37_0.7Gss_599ns_17122019_0ch



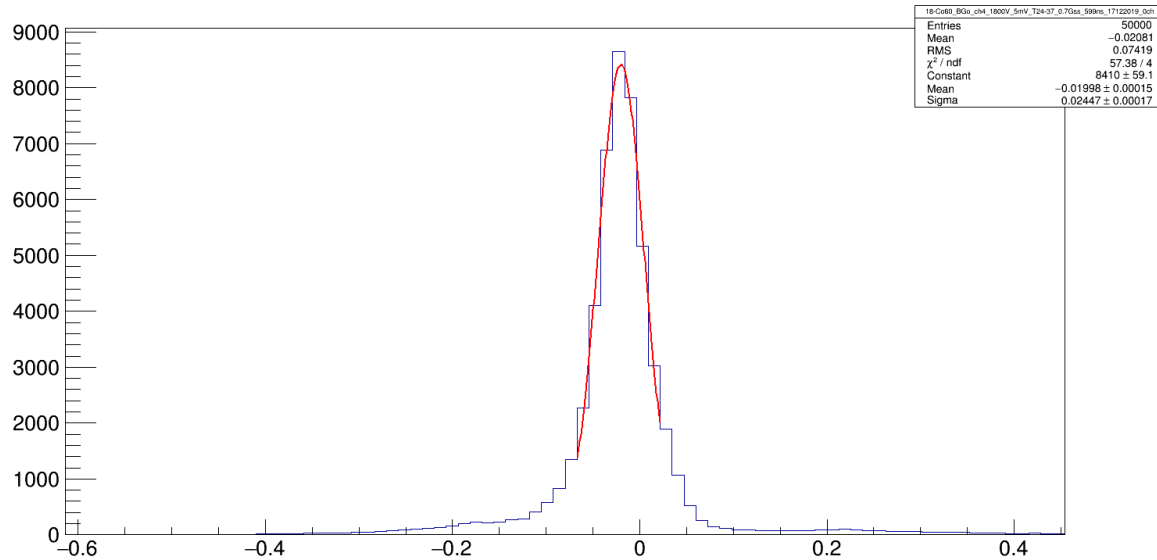
16-Co60_BGo_ch4_1600V_5mV_T24-37_0.7Gss_599ns_17122019_0ch



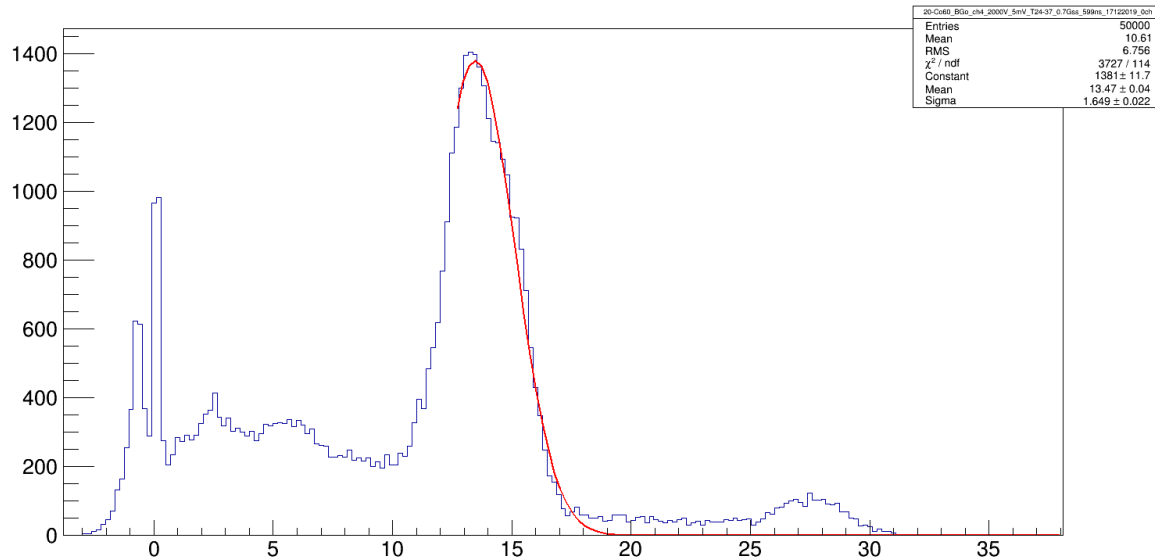
17-Co60_BGo_ch4_1700V_5mV_T24-37_0.7Gss_599ns_17122019_0ch



18-Co60_BGo_ch4_1800V_5mV_T24-37_0.7Gss_599ns_17122019_0ch

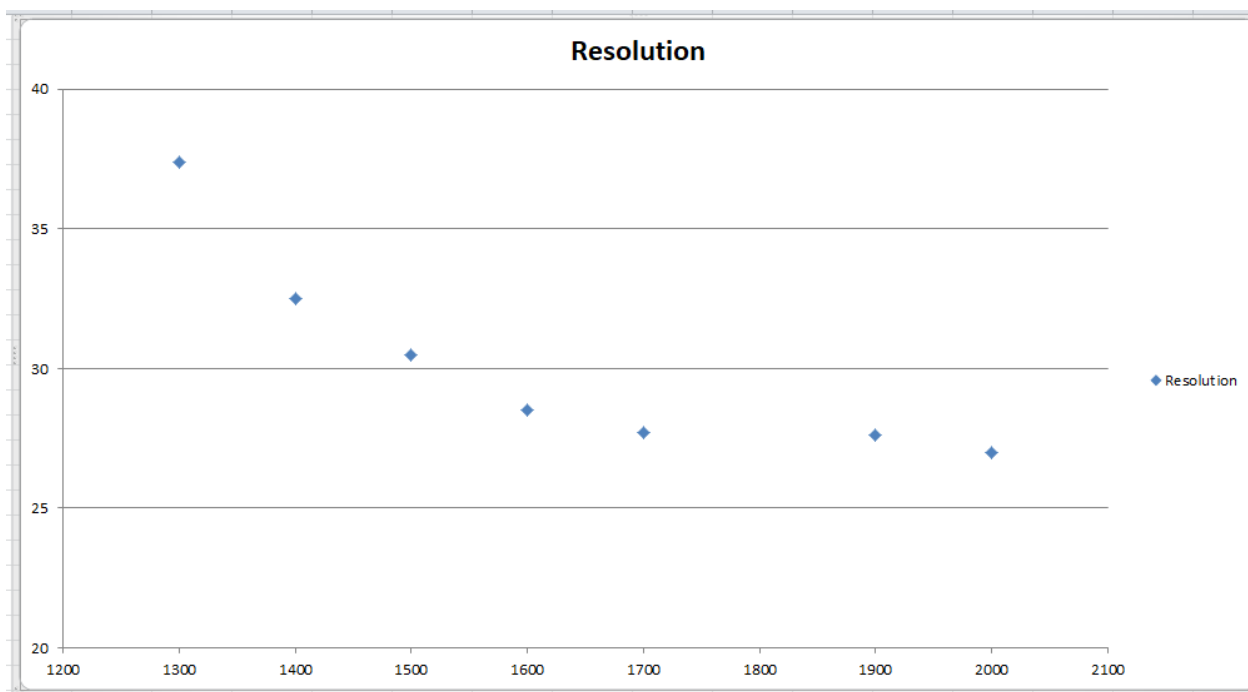


20-Co60_BGo_ch4_2000V_5mV_T24-37_0.7Gss_599ns_17122019_0ch

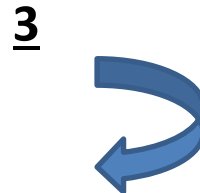
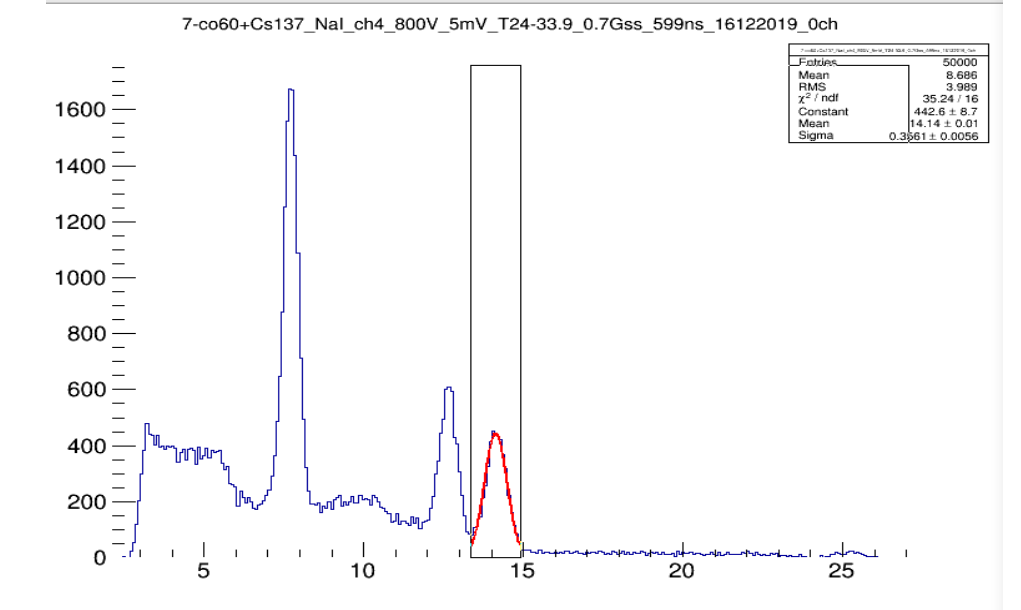
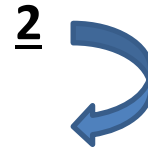
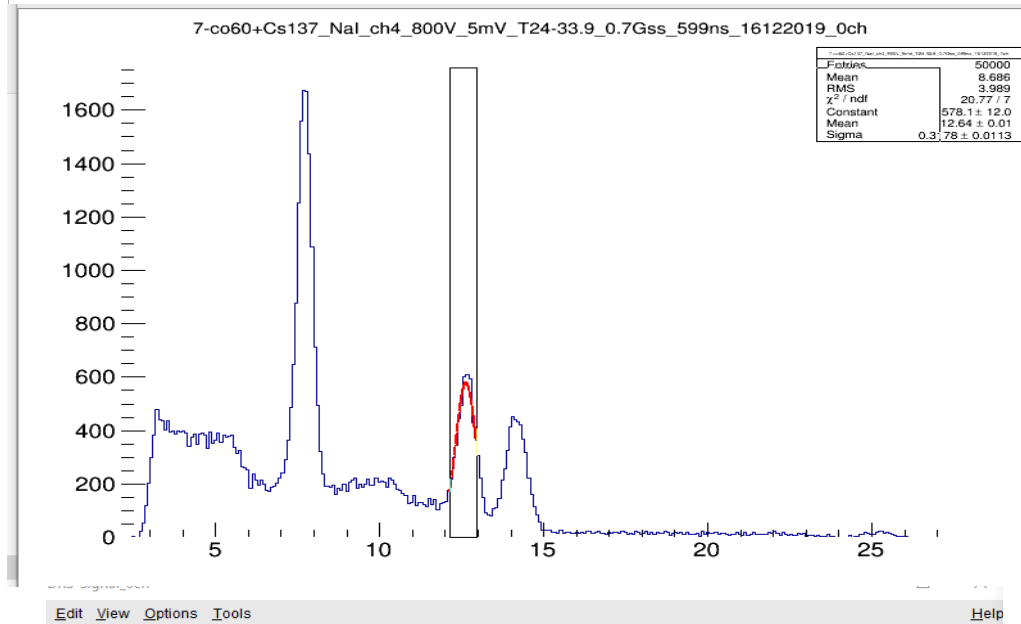
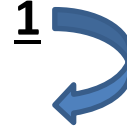
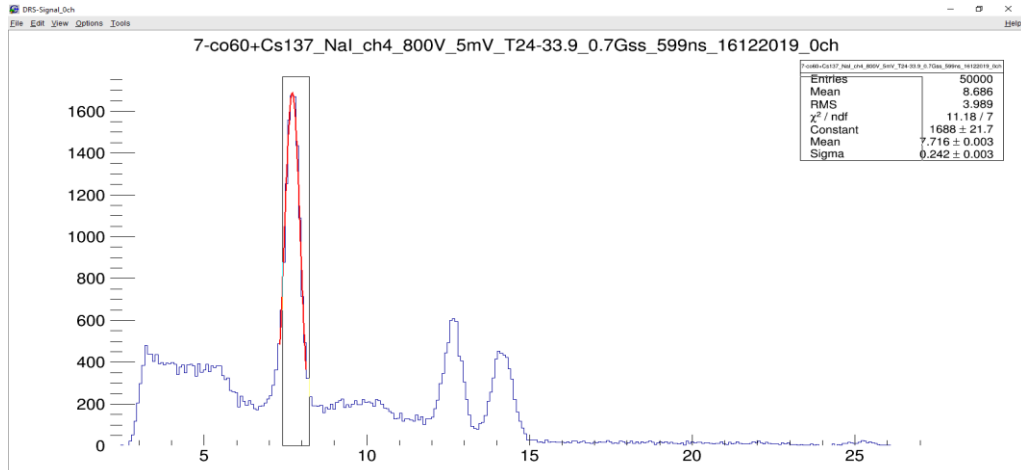


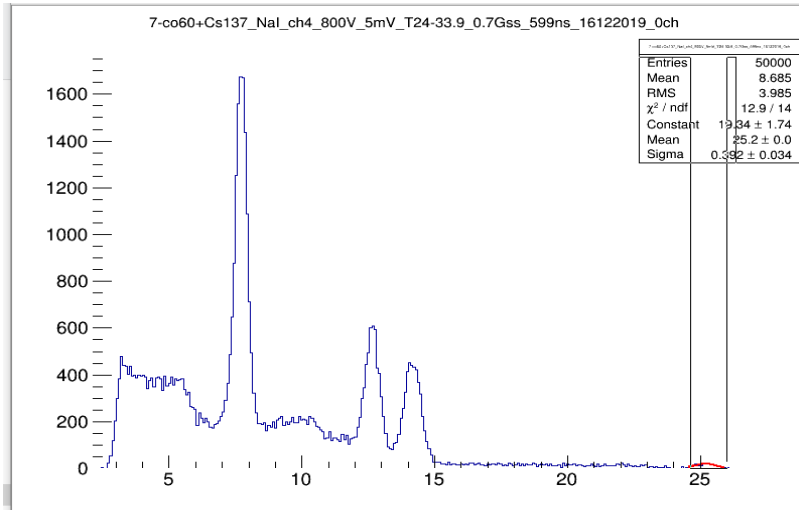
Applied volt	1300	1400	1500	1600	1700	1800	1900	2000
Resolution%	37.4	32.5	30.9	28.51	27.7	-	27.6	27.1

➤ The graph between the resolution on the y axis and the applied voltage on the x axis



Nal calibration

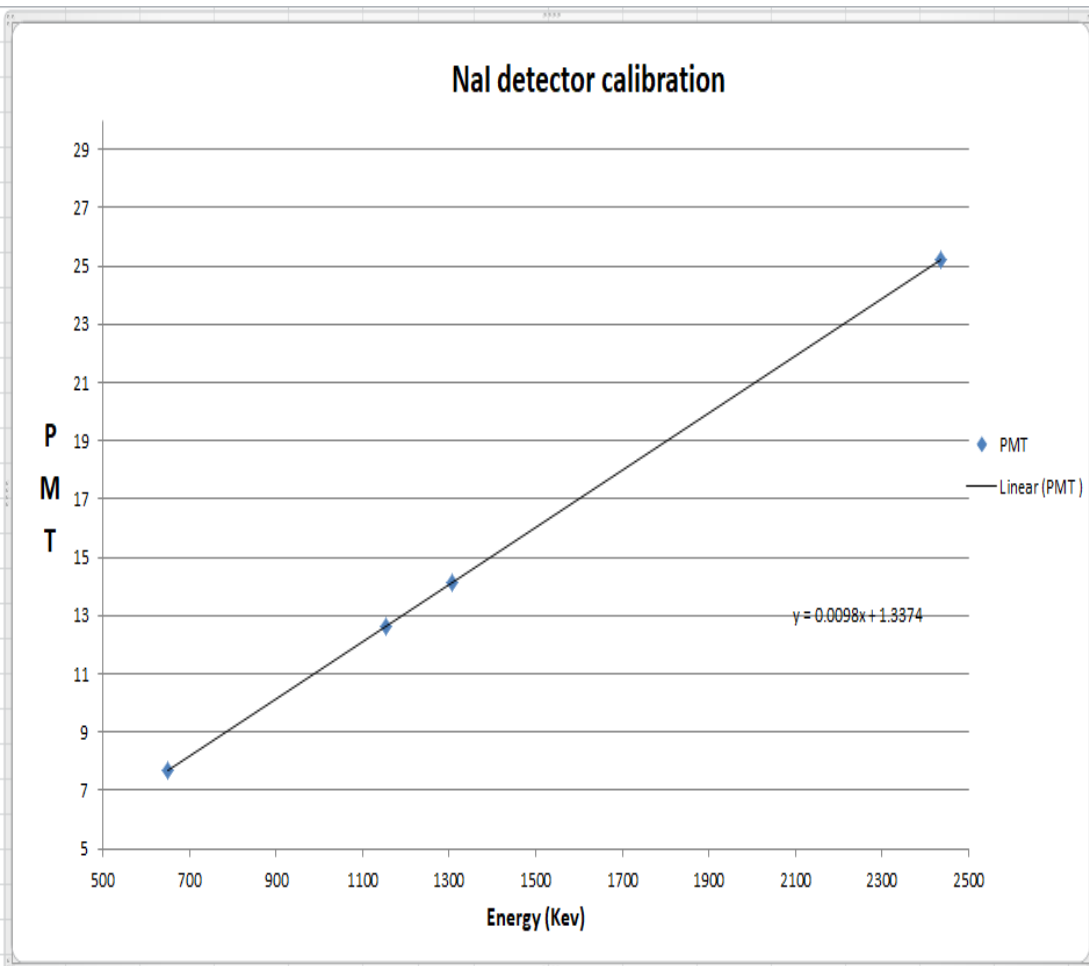




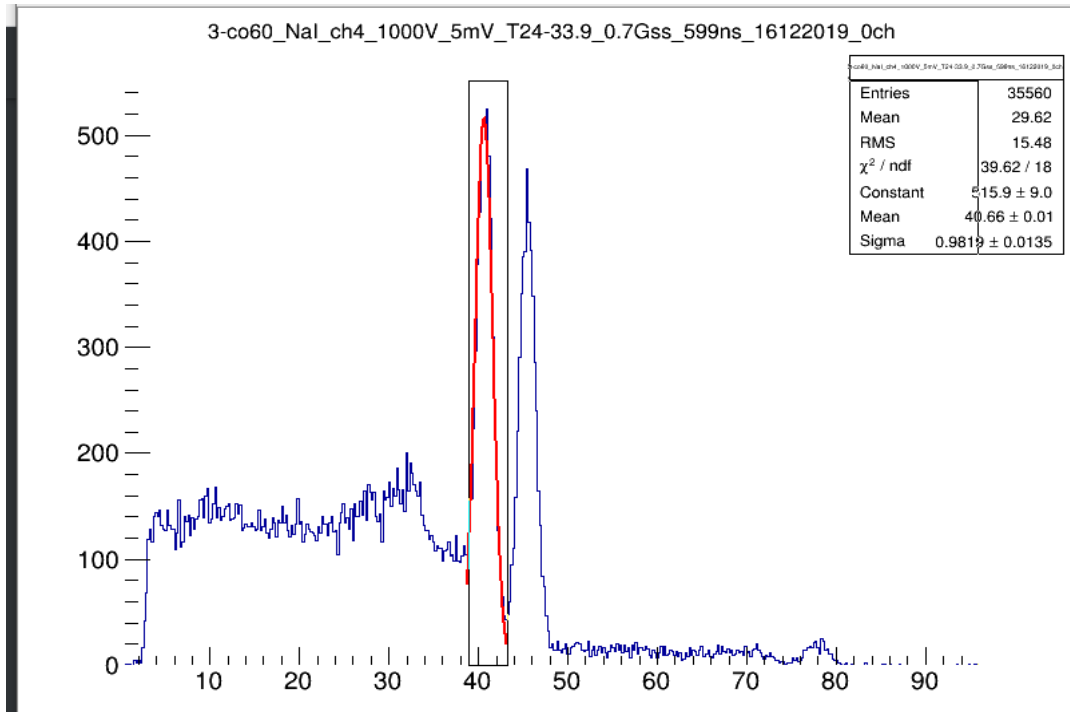
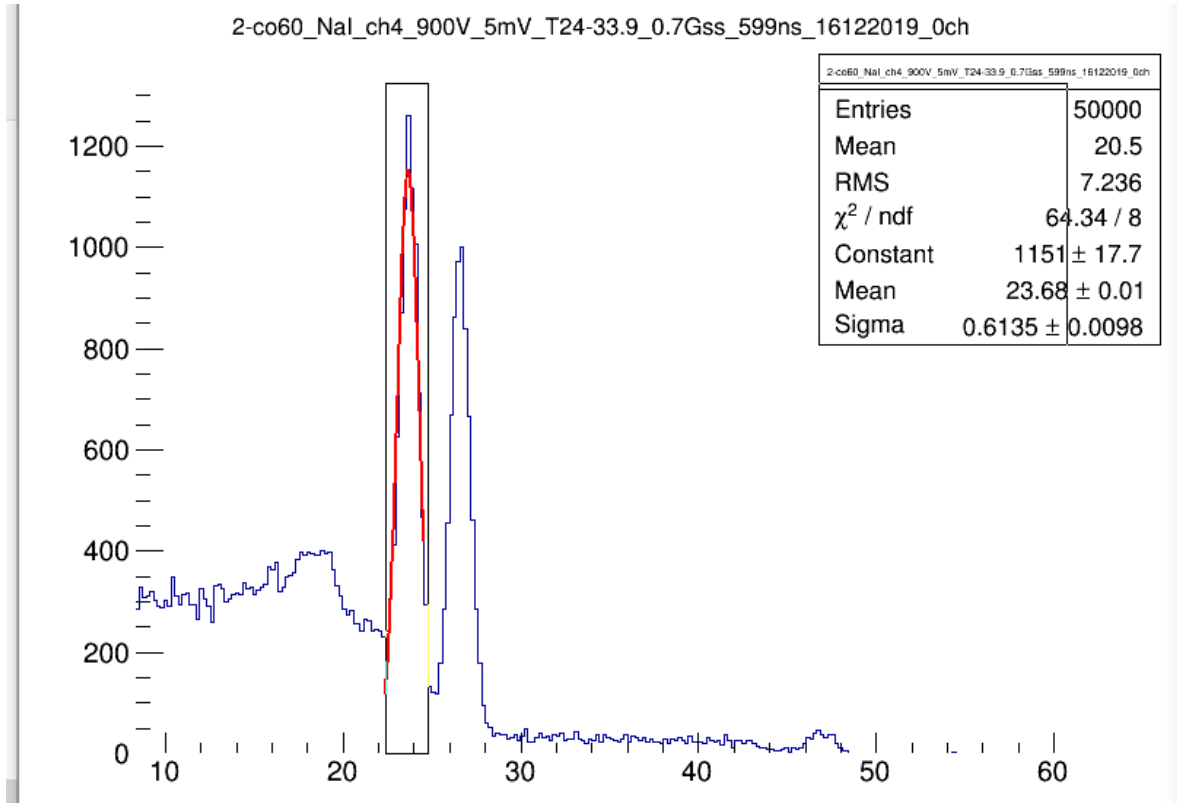
4

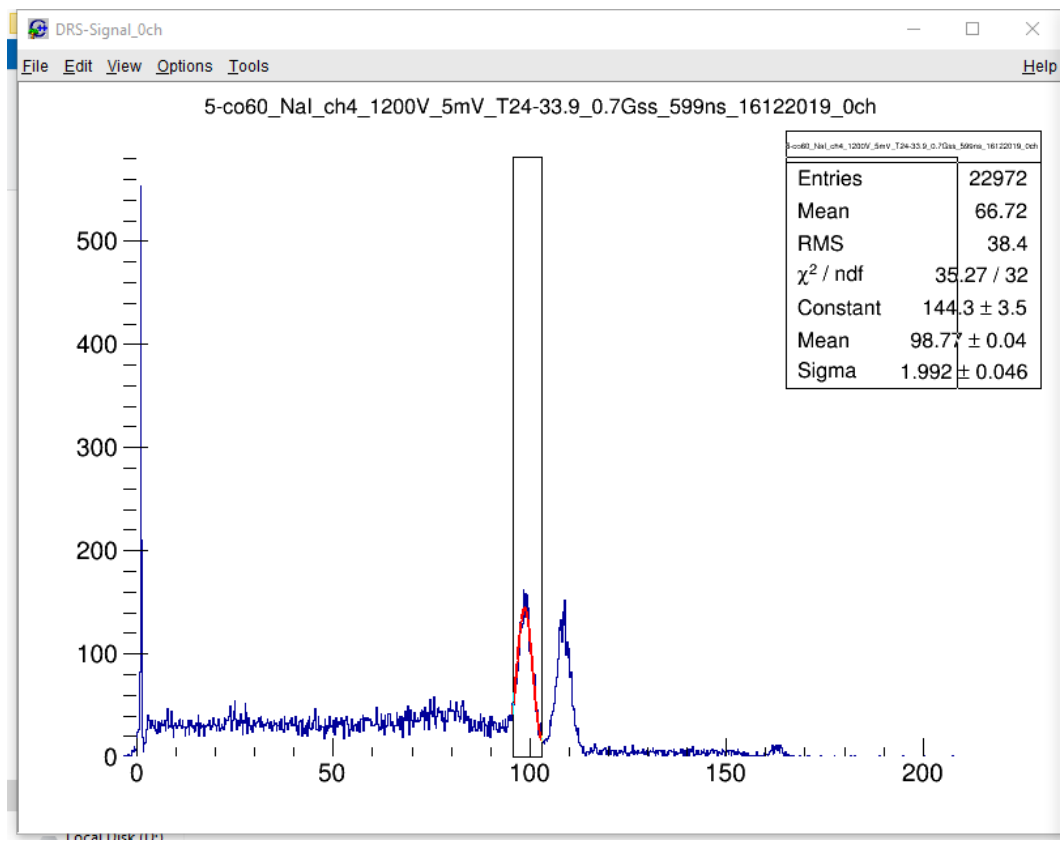
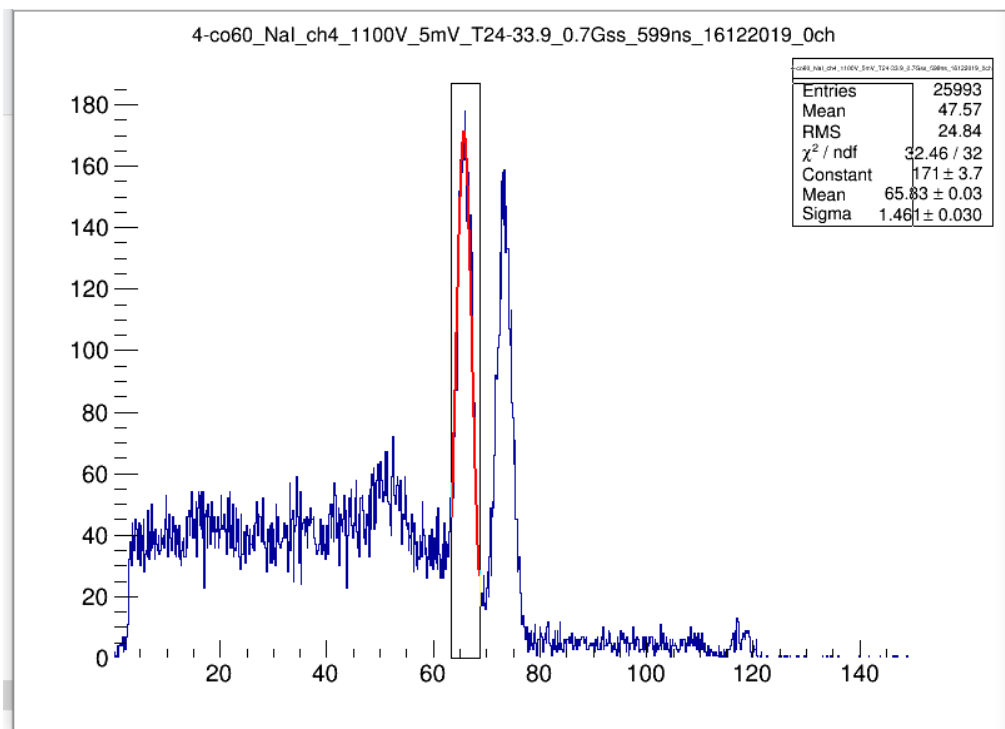
<u>Peak n</u>	<u>1</u>	<u>2</u>	<u>3</u>	<u>4</u>
<u>PMT</u>	<u>7.71</u>	<u>12.64</u>	<u>14.14</u>	<u>25.2</u>
<u>Energy(Kev)</u>	<u>650.2</u>	<u>1153.67</u>	<u>1306.73</u>	<u>2435.30</u>

Energy (Kev)	PMT
650.2	7.71
1153.67	12.64
1306.73	14.14
2435.3	25.2



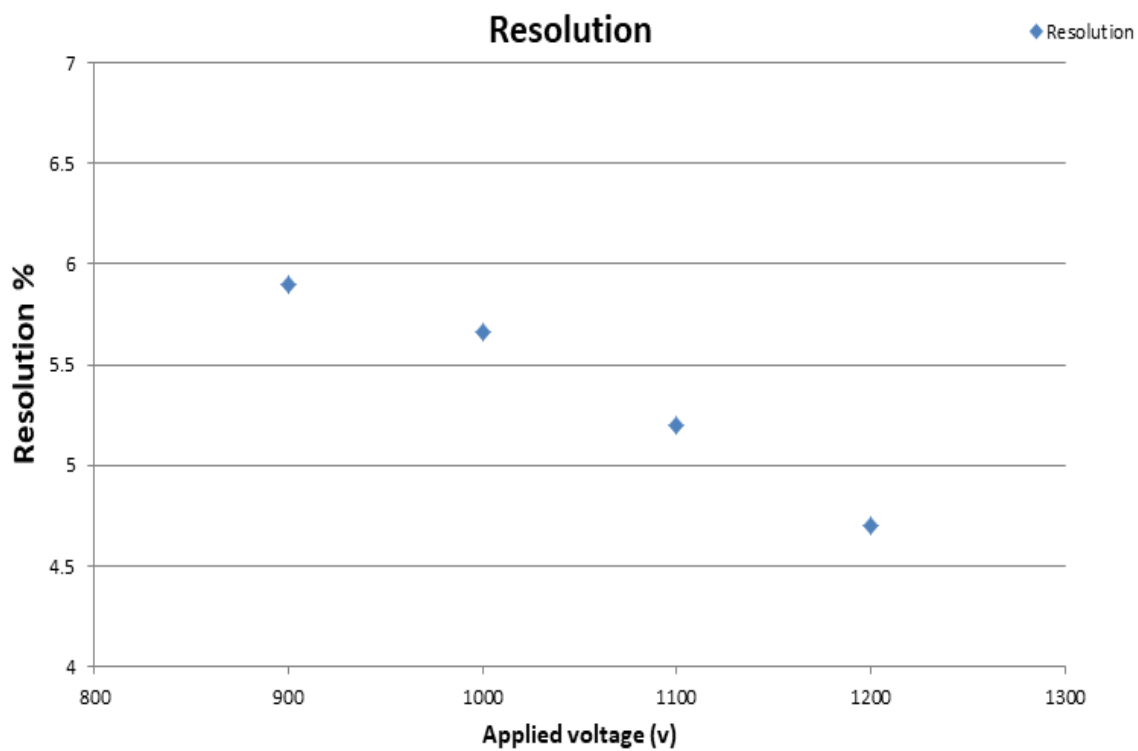
Nal resolution:





Applied volt	900	1000	1100	1200
Resolution %	5.9	5.67	5.2	4.7

Applied v	Resolution
900	5.9
1000	5.66
1100	5.2
1200	4.7



Attenuation coefficient

$$\triangleright I = I_0 * e^{-\mu x}$$

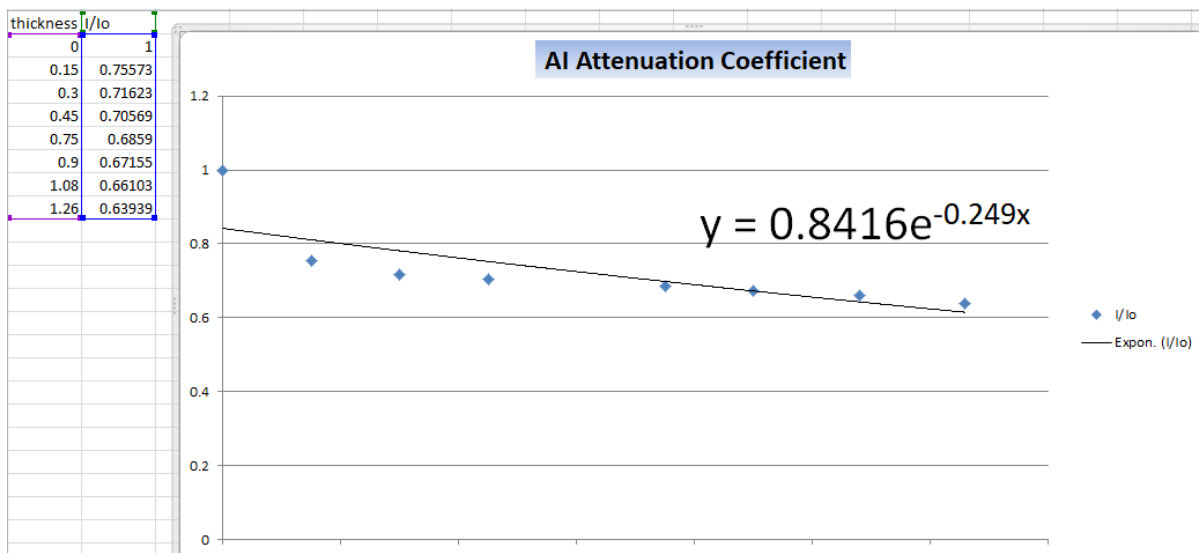
- First AI

Thickness(cm)	I/I ₀
0	1
0.15	0.75573
0.3	0.71623
0.45	0.70569
0.75	0.68596
0.9	0.67155
1.08	0.66103
1.26	0.63939

μ =slope, μ for AI=0.2

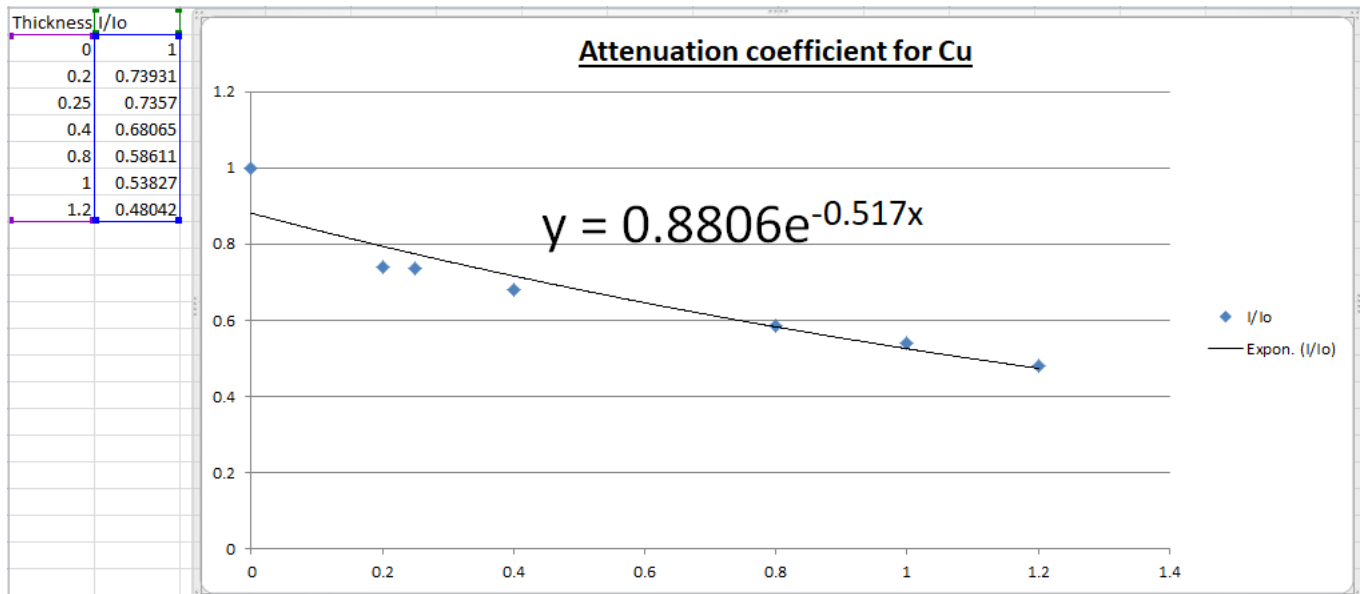
From this we can obtain the Mass Attenuation Coefficient:

Given that mass attenuation coefficient can be obtained from the mathematical formula: $\frac{\mu}{\text{Density}}$



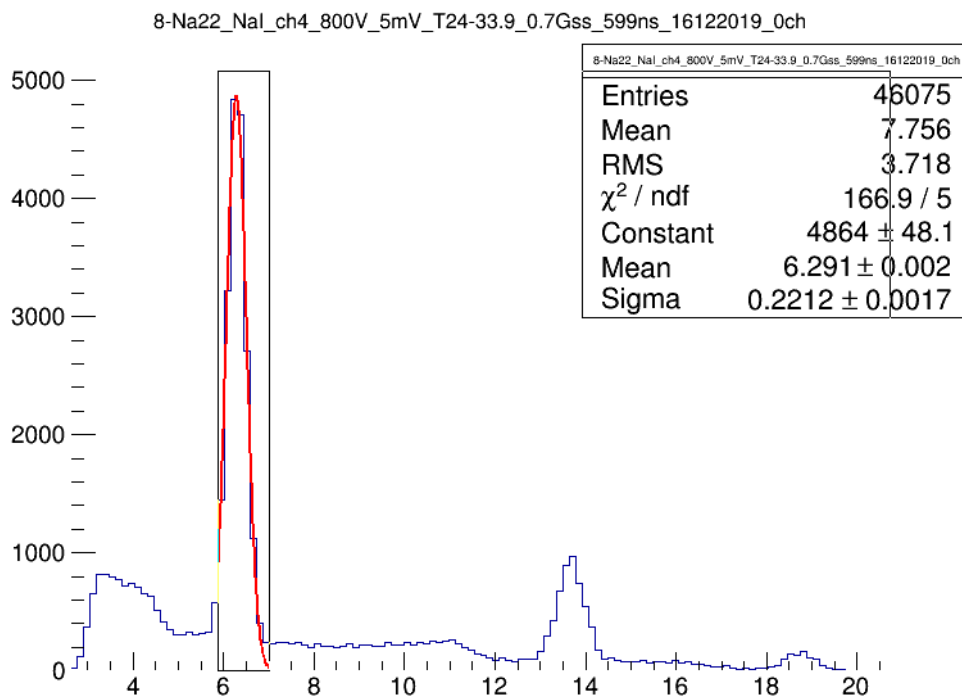
- For Cu

Thickness(cm)	I/I ₀
0	1
0.2	0.73931
0.25	0.7357
0.4	0.68065
0.8	0.58611
1	0.53827
1.2	0.48042



$\mu=0.5$

● **The identification of unknown sources**



Mean=6.291

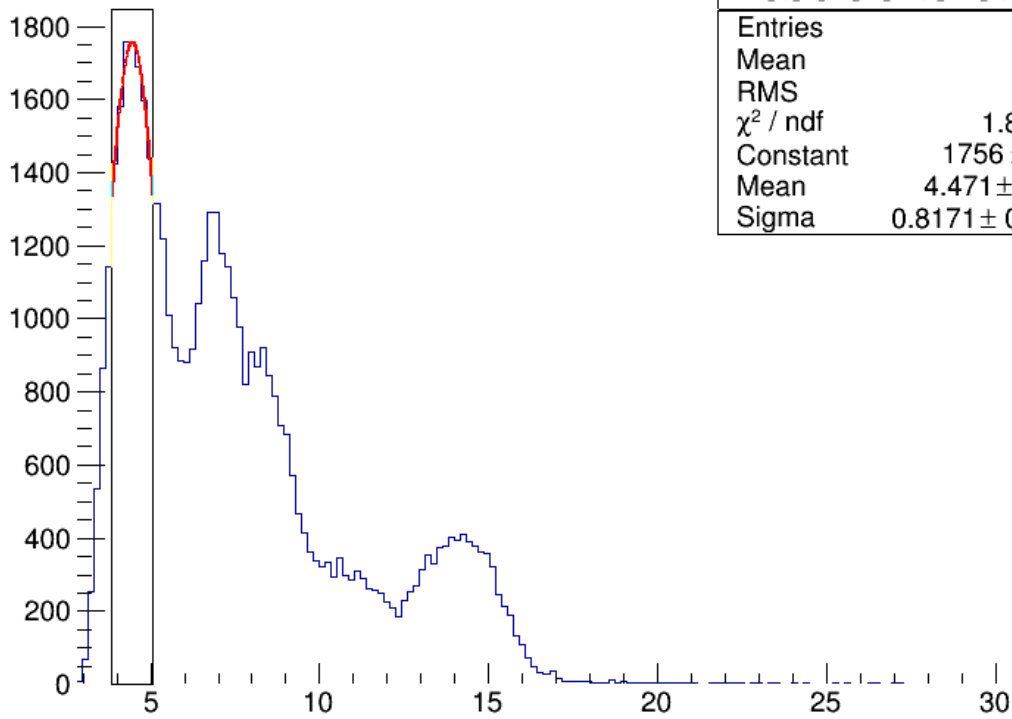
From the equation $y=0.0098x+1.3374$

Substituting in the last equation mean=y

From that we get $x=505.46$

E=505.46 Kev.

9-Am241_Nal_ch4_800V_5mV_T24-33.9_0.7Gss_599ns_16122019_0ch



Mean=4.471

From the equation $y=0.0098x+1.3374$

Substituting in the last equation mean=y

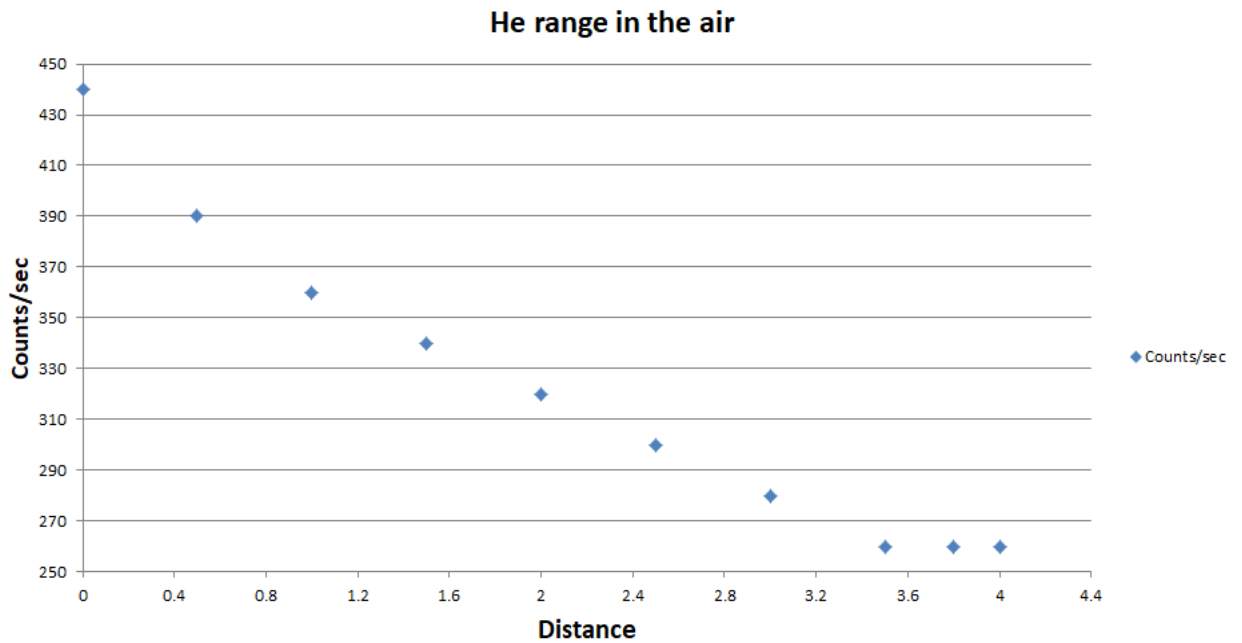
From that we get $x=319.7$

- $E=319.7\text{Kev}$

Determine the range of He in the air

- Source Pu239
- Detector Plastic
- Applied voltage 2000V

Distance	Counts/sec
0	440
0.5	390
1	360
1.5	340
2	320
2.5	300
3	280
3.5	260
3.8	260
4	260



After a certain distance which here equal to 3.5 cm we find that the counts/sec is constant so from that we conclude that the range of alpha in the air =3.5 cm

Pixel detector task

Contents:

- 1- An overview of **pixel detector**, its uses and importance.
- 2- Determination the **range of Alpha particles** with (Am241) energy about 4 MeV in air using pixel detector.

Pixel detectors: First pixel detectors in HEP were CCDs derived from digital cameras, as it is a very advanced detector that consists of main three parts:

- 1- Sensor (which can be Si or germanium arsenide)
 - 2- - Electronic chip
 - 3- USB
- The size of the sensor is 1.5x1.5 cm.
 - It has 256 x 256 pixels (65.536 pixels).
 - The pixel size is 55 μ m x 55 μ m.

2. Determination the range of Alpha particles with (Am241) energy about 4 MeV in air using pixel detector

Alpha particles travel in nearly straight paths because they are thousands of times heavier than the atomic electrons to which they gradually lose energy, so in our experiment we will determine their **range** in the air using pixel detector as we will vary the distance between the detector and the alpha source till there is no alpha particle detected, from this distance we obtain our maximum range which will be **about 3 cm**

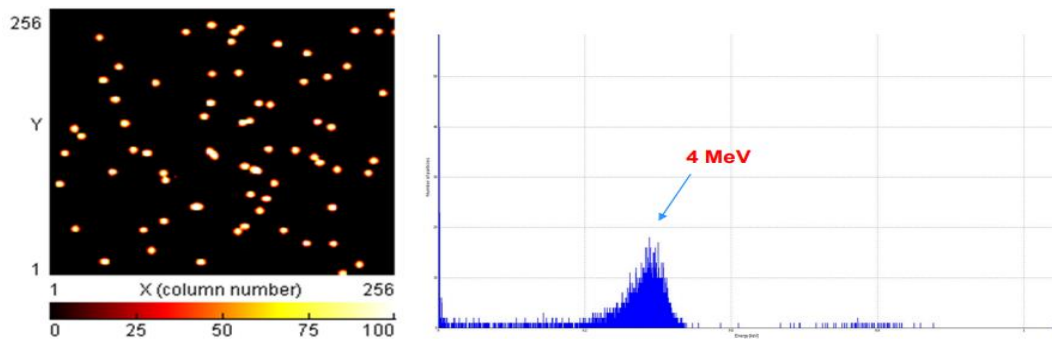


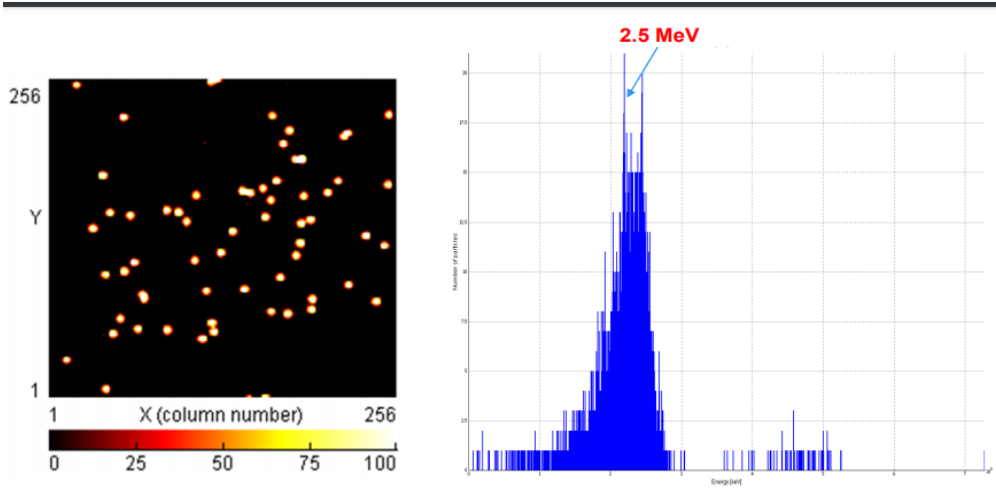
Fig. (15.a)

- ***Absorption of alpha particle energy in the air at zero cm***

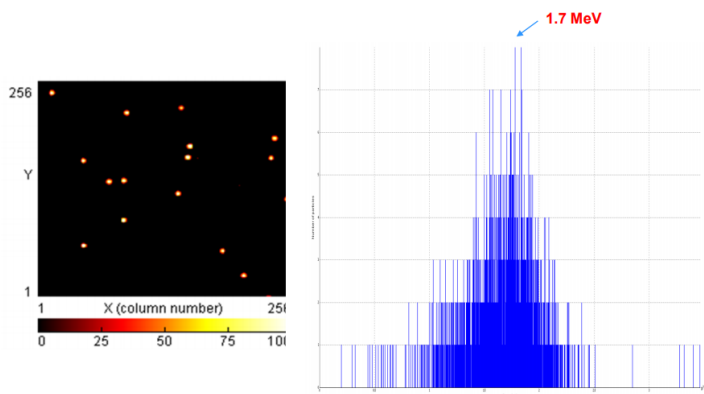
As you see the alpha particles still have 4 Mev at 0 cm from the source,

Now let's see the changes at 1cm:

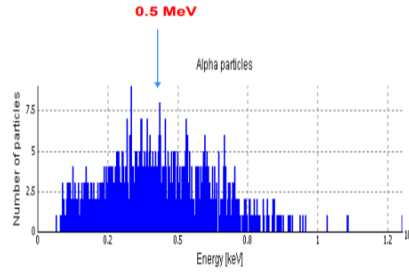
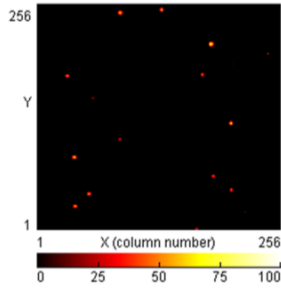




Now some of the energy has been absorbed in the air, and the alpha energy will keep decreasing with increasing our distance, with repeating the previous step at different distances (2, 2.5 cm) at 3 cm the detector is no longer finding any alpha particle, and from that we conclude that **Maximum of alpha particle range is 3 cm**

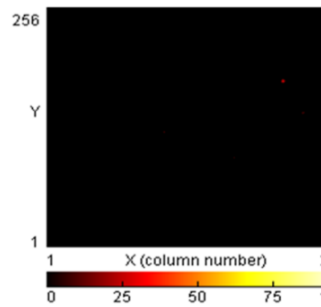


Absorption of alpha particle energy in the air by moving the alpha source away by 2 cm



**Absorption of alpha particle energy in the air
by moving the alpha source away by 2.5 cm**

no alpha particles are detected



Maximum of alpha particle range is 3 cm